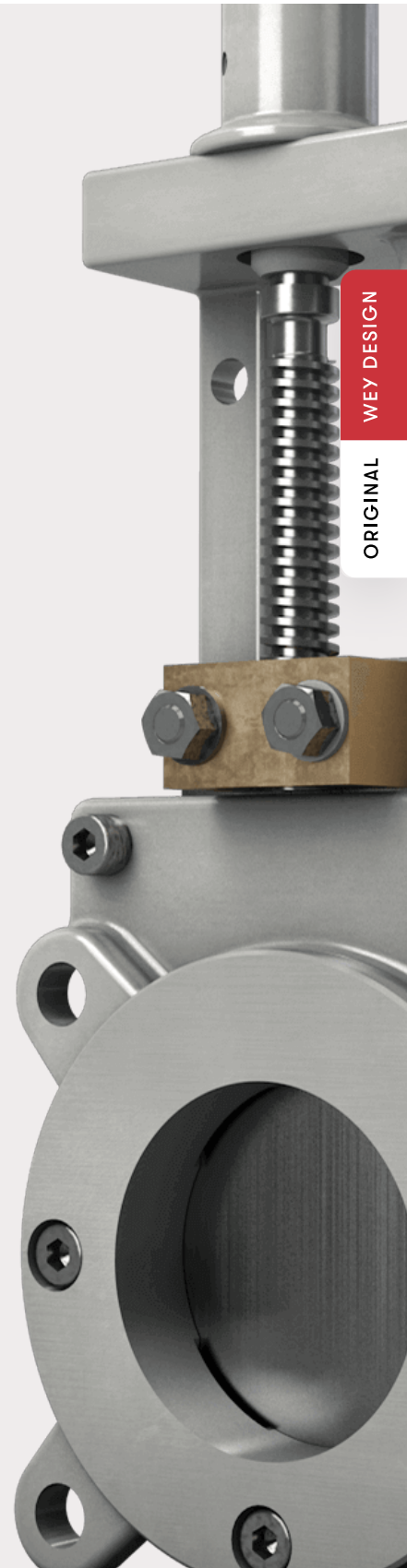




# KNIFE GATE VALVES

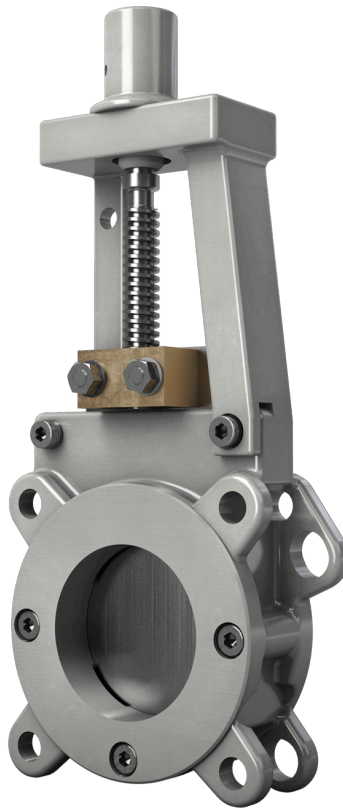
## T13 SERIES



WEY DESIGN  
ORIGINAL

# T13 SERIES

The T13 model really is a unique design. It is designed for shut-off isolation of differential pressure level sensing. Unlike other transmitter isolating valves, which are only adapted from standard knife gate valves, the T13 model was developed for the sole purpose of isolating the transmitter. The T13 uses standard 1/2" socket drive.



## CHARACTERISTICS T13 SERIES

---

**3 inch**

Nominal sizes

---

**Stainless steel**

Material

---

**0 – 150 psi**

Pressure rating

---

**ANSI Class 150**

Flange drilling

---

**MSS-SP81**

Face to face dimension

---



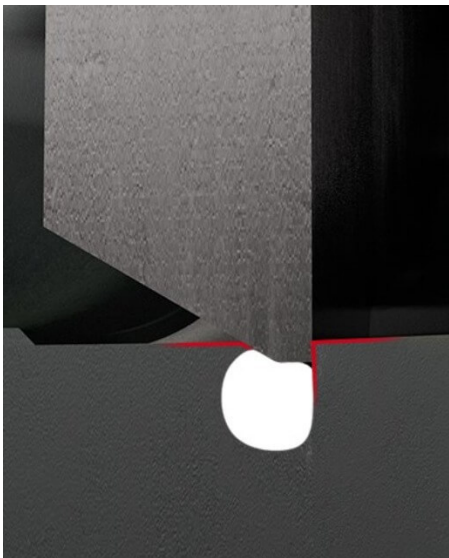
A unique transverse seal, consisting of a transverse seal profile and packing compound, makes the body bubble-tight towards the atmosphere.



The transverse seal can be repacked at any time and under full pressure using the lateral packing screws.



With its optimized gate geometry, accumulated media is pushed out of the gate guide and flushed out into the bore by the increased flow.



In the closed end position, the gate is also mechanically supported.

## APPLICATION AREAS

### Pulp and paper industry

e.g. Pulp Stock (Low to high density), Chemical solutions, bleaching agents ...

## MATERIAL OF CONSTRUCTION





Part	Stainless steel
Body	316/317 Stainless steel
Gate	316/317 Stainless steel
Seal	Aflas
Topwork	316/317 Stainless steel
Stem / Piston rod	430F

Other materials upon request

## DOWNLOADS

### General documents


---


Product brochure knife gate valves	PDF	<a href="#"></a>
Instruction manual	PDF	<a href="#"></a>
Seal arrangement	PDF	<a href="#"></a>
Lubricants	PDF	<a href="#"></a>

---

**CONTACT US FOR YOUR  
INDIVIDUAL SOLUTION.**

 [Contact](#)

 +1 662 963 2020

 [rfq@weyvalve.com](mailto:rfq@weyvalve.com)