

DESUPERHEATER STATION

Preventative Maintenance Program

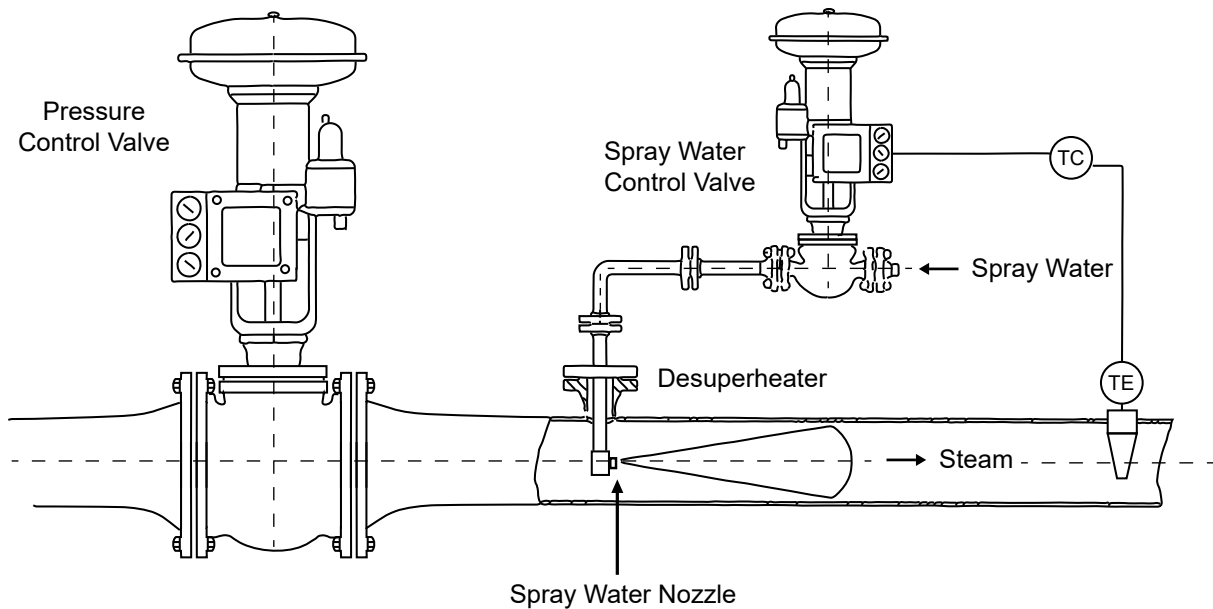
Desuperheater nozzle inspection, testing, and replacement services to improve your plant's performance and protect vital equipment.



Desuperheating Equipment Plays a Critical Role

It provides efficient, high-quality steam to a variety of applications throughout a plant. Unfortunately, issues like improper nozzle spray are common, and if not properly addressed, can lead to expensive repairs, unplanned shutdowns, loss of productivity, and loss of profitability.

The pressure reducing valve, spray water valve, and spray nozzle all play an equally important role in maintaining adequate temperature control. The desuperheater nozzle is physically the smallest component of the system, but it is vital to the success of the desuperheater station.



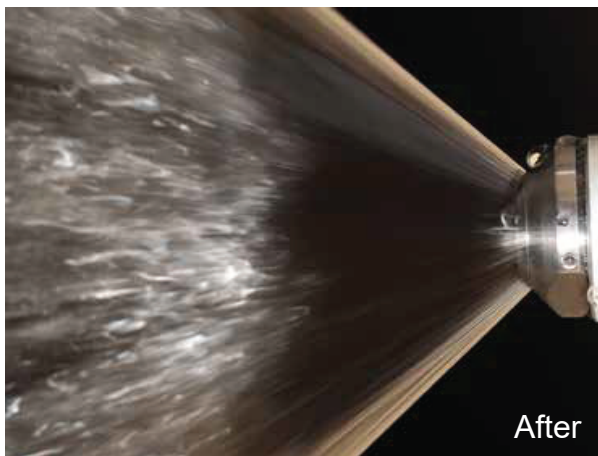
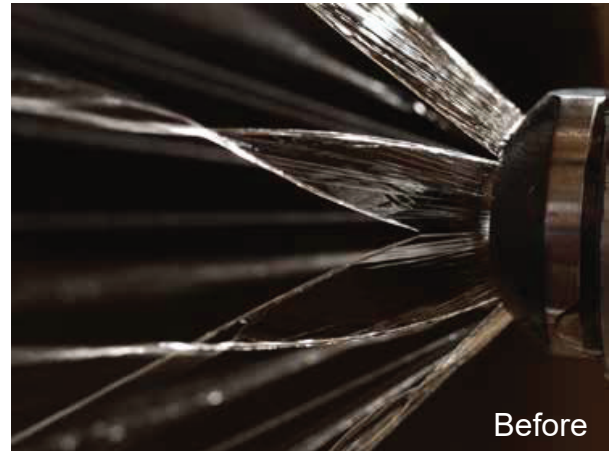
Neglected spray water nozzles can lead to temperature control issues for the plant along with potential water hammer and damaged downstream piping. Our nozzle testing program not only allows for a visual inspection of the desuperheater and surrounding piping, but also the nozzle and spray pattern itself.

Small Changes, Big Results

A simple routine maintenance program to test and replace your nozzles regularly can help reduce the risk of costly piping and equipment failures. We utilize our fully self-contained mobile testing unit to determine whether your nozzles are operating properly. During the testing process, we assess the nozzle's spray pattern. If the nozzle's spray pattern passes, we thoroughly clean and reinstall it back into the desuperheater. If the nozzle's spray pattern does not pass the test, it is replaced.

Improper Spray Water Nozzle Maintenance Can Lead To:

- Poor quality steam, resulting in lost production efficiency and revenue
- Erosion and wear on piping
- Damage to downstream equipment
- Decreased capacity, leading to under spray
- Inadequate temperature control
- Thermal stress, causing piping cracks and water hammer



Our Spray Nozzle Maintenance Program Includes:

- Time-based inspection, testing, and repair of the pressure control valve, spray water valve, and desuperheater nozzle
- On-site testing using our nozzle testing rig
- In-depth repair report including diagnostic tests and future recommendations
- Replacement parts stocked at our warehouse
- Overall desuperheater station performance review with upgrade recommendations



For more information,
Contact your Account Manager
or call **(704) 375 4464**

24/7 Emergency Services

(704) 375 4464 | (804) 858 5800 | remason.com
NORTH CAROLINA | SOUTH CAROLINA | VIRGINIA



Scan the QR code
to learn more

