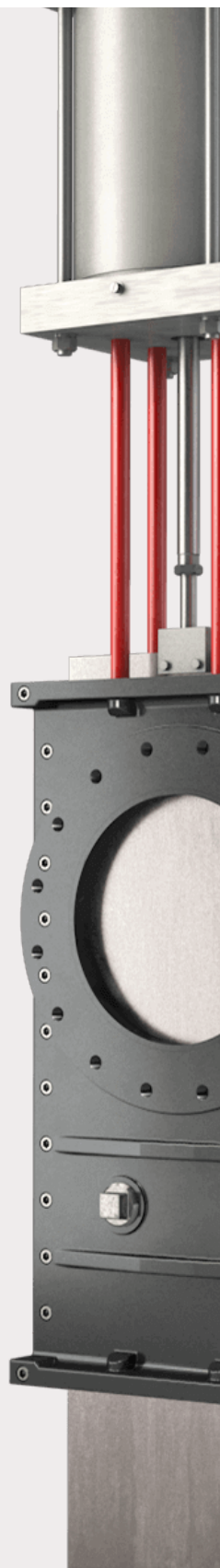




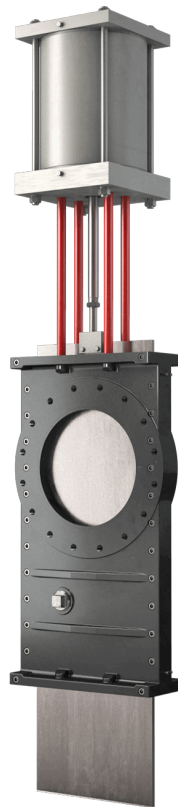
KNIFE GATE VALVES

SG SERIES



SG SERIES

With its special O-Port design, the SG model is suitable for the most difficult applications involving solids. Due to its unique design, it can easily cut through a medium column holding solids. The integrated transverse seal sets the SG model apart from conventional O-Port gate valves, guaranteeing maximum tightness and performance. .



CHARACTERISTICS SG SERIES

2 – 26 inch

Nominal sizes

Cast steel, Special material

Material

0 – 150 psi

Pressure rating

ANSI Class 150

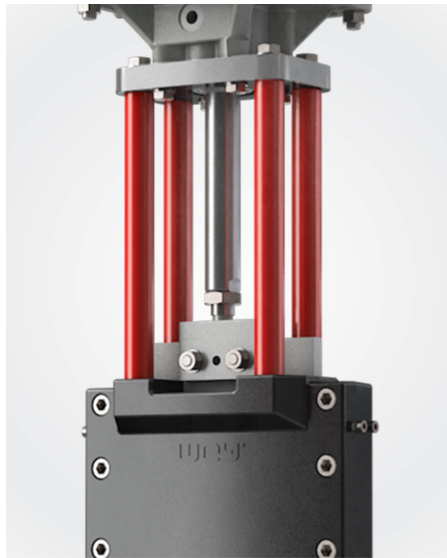
Flange drilling

MSS-SP81

Face to face dimension



The through gate design allows valve to be closed through stagnant media columns or if there are long-fiber media.



Robust 4-post topwork for maximum load and a wide variety of actuator types.

APPLICATION AREAS

Biogas plants

e.g. Wood chips ...

MATERIAL OF CONSTRUCTION

Part	Cast steel
Body	Cast Ni-Resist
Gate	440 Stainless steel
Seal	410 / Aflas
Topwork	Carbon steel
Stem / Piston rod	430F

Other materials upon request

CORROSION PROTECTION

Body	EKB powder coating
Topwork	EKB powder coating
Screws	Stainless steel

ACTUATORS



Handwheel



Bevel gear



Pneumatic cylinder







Hydraulic cylinder






Electric actuator

DOWNLOADS

General documents


Product brochure knife gate valves	PDF	
Instruction manual	PDF	
Seal arrangement	PDF	
Lubricants	PDF	


Data sheets

SG with handwheel	PDF	
SG with bevel gear	PDF	
SG with pneumatic cylinder	PDF	

**CONTACT US FOR YOUR
INDIVIDUAL SOLUTION.**

 [Contact](#)

 +1 662 963 2020

 rfq@weyvalve.com