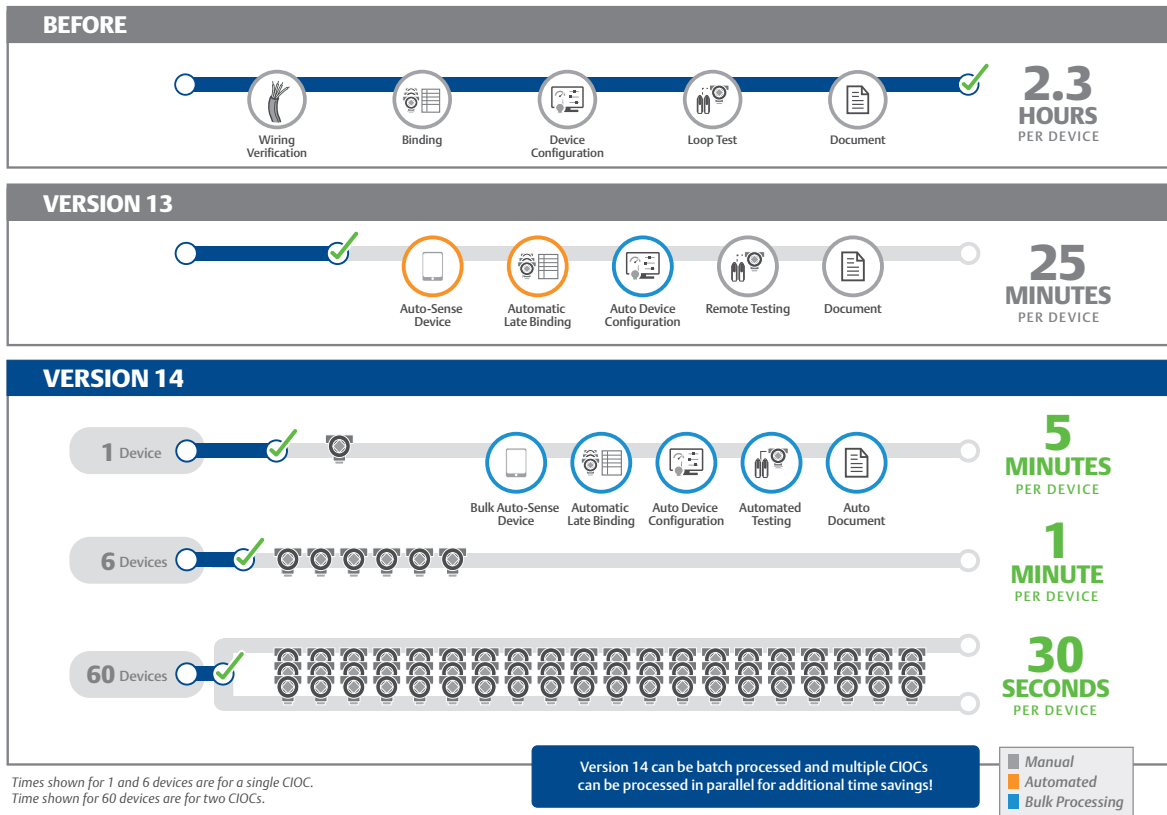
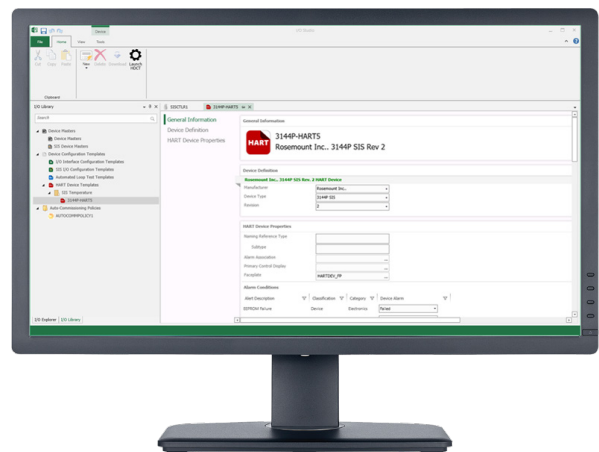


## Commissioning Devices has never been easier – or faster.

Take device commissioning off the critical path – included in DeltaV™ v14 is a new commissioning application that allows you to manage the entire commissioning work flow for commissioning HART devices. There is also a new studio environment, called I/O Studio, that allows you to define device templates – imagine simply initiating a “one click” commissioning process – it’s that easy and that fast.



I/O Studio allows you to configure IO devices even before the device location is known, commissioning policies and loop test settings that will be used by the DeltaV Device Commissioner. I/O Studio will completely decouple hardware and software configuration and development, and enable easy, one-click commissioning via the DeltaV Device Commissioner.



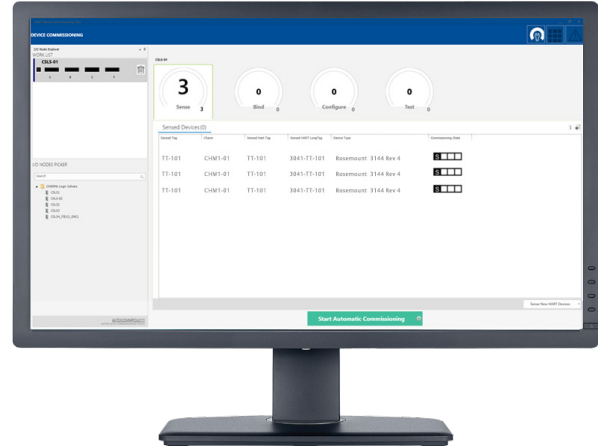
The DeltaV Device Commissioner is your new go-to application for all commissioning activities for HART devices for both DeltaV and DeltaV SIS and AMS Device Manager. Based on your commissioning policies set in I/O Studio, Device Commissioner commissions policies, commission all devices automatically with only one mouse click.

Devices will automatically be:

- **Sensed** → Auto sense HART device
- **Bound** → Bind the sensed device tag to all references within the configuration
- **Configured** → Integrating AMS Device Manager gets data from your device templates automatically sent to the device.
- **Tested** → Loop tests performed automatically based on loop test templates previously configured in I/O Studio

Punch lists are generated detailing outstanding issues and their suggested resolution. Commissioning reports provide tracking and documentation of device commissioning from start to finish. Also generates as-built reports using device tag, CHARM location and typical wiring diagram info.

DeltaV Device Commissioner is your one-stop commissioning app, that will manage commissioning activities from start to finish, including progress and documentation.



*\* Available in Fall 2018*

**Emerson**  
**North America, Latin America:**  
 ☎ +1 800 833 8314 or  
 ☎ +1 512 832 3774

**Asia Pacific:**  
 ☎ +65 6777 8211

**Europe, Middle East:**  
 ☎ +41 41 768 6111

🌐 [www.emerson.com/deltav](http://www.emerson.com/deltav)

©2018, Emerson. All rights reserved.

The Emerson logo is a trademark and service mark of Emerson Electric Co. The DeltaV logo is a mark of one of the Emerson family of companies. All other marks are the property of their respective owners.

The contents of this publication are presented for informational purposes only, and while diligent efforts were made to ensure their accuracy, they are not to be construed as warranties or guarantees, express or implied, regarding the products or services described herein or their use or applicability. All sales are governed by our terms and conditions, which are available on request. We reserve the right to modify or improve the designs or specifications of our products at any time without notice.